

## MAIN & FLEX GALLERY SPACE PRICE LIST

MOS Weekend 1= May 4 & 5; Weekend 2= May 11 & 12, 2024

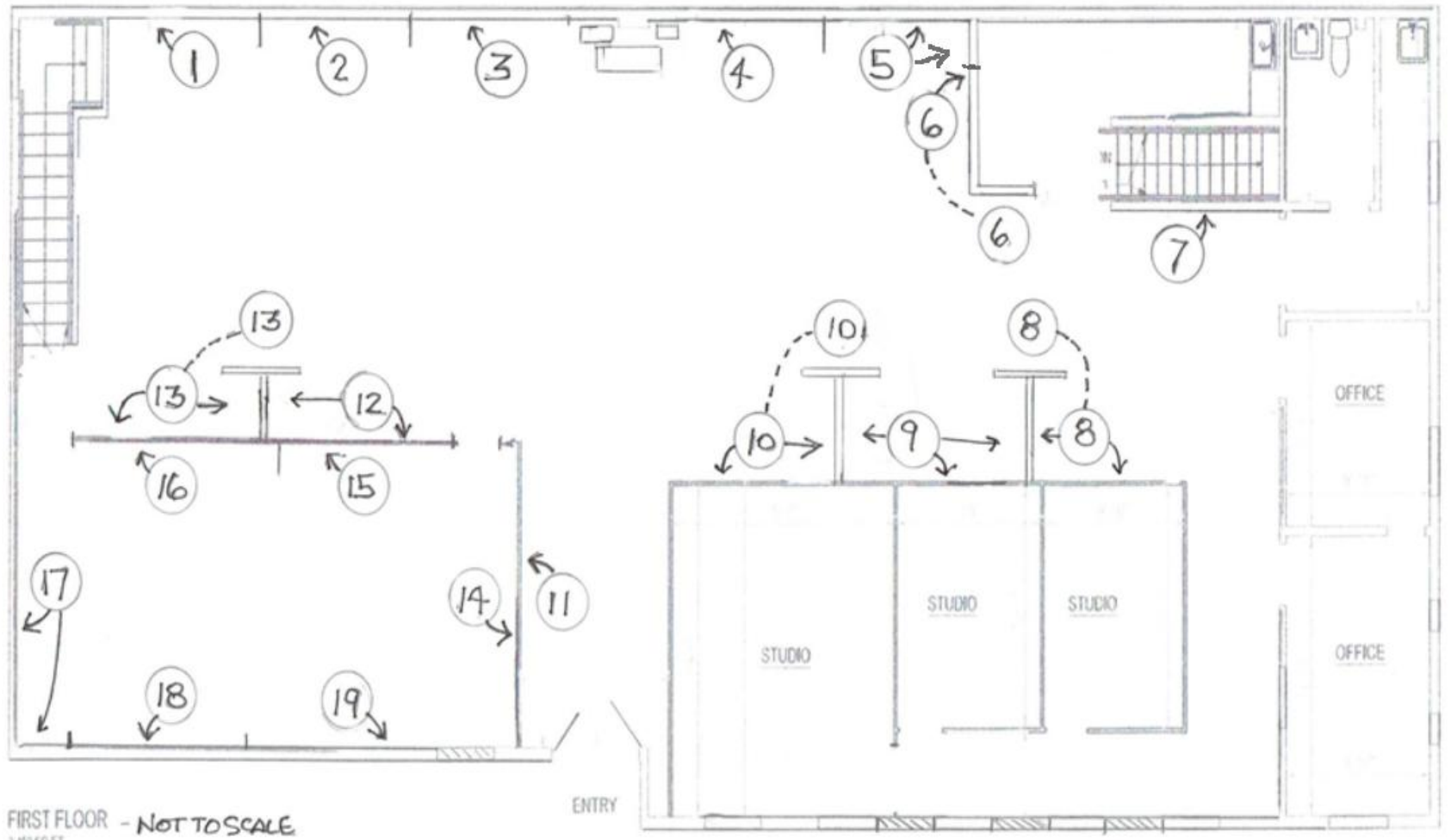
### REQUIREMENTS to exhibit in Main & Flex Gallery at Marin Society of Artists during Marin Open Studios @ MSA:

- MOS registration **IS REQUIRED for Main Gallery & Flex Gallery space rentals!!!**
- Must **Pay MSA** within 7 days after email confirmation from [mos@msartists.org](mailto:mos@msartists.org) of space assignment
- Must **Register with MOS** within and provide proof of MOS registration within 7 days after MSA email confirmation
- Link to register with MOS <https://marinopenstudios.org/register/>

Fees below are for 1 weekend

MAP #	PRICE	WALL MEASUREMENTS (W x H) in feet linear ft	
1	\$100	10 x 8	80 sq. ft.
2	\$100	10 x 8	80 sq. ft.
3	\$100	10 x 8	80 sq. ft.
4	\$100	10 x 8	80 sq. ft.
5	\$110	(10 x 8) + (2 x 4)	88 sq. ft.
6	\$65	(6 x 4) + (4 x 7)	52 sq. ft.
7	\$90	10 x 7	70 sq. ft.
8	\$150	(12 x 6) + (6 x 4) + (4 x 6)	120 sq. ft.
9	\$135	(10 x 6) + (6 x 4) + (6 x 4)	108 sq. ft.
10	\$135	(10 x 6) + (6 x 4) + (4 x 6)	108 sq. ft.
11	\$90	12 x 6	72 sq. ft.
12	\$130	(13 x 6) + (6 x 4)	102 sq. ft.
13	\$150	(12 x 6) + (6 x 4) + (4 x 6)	120 sq. ft.
14	\$90	12 x 6	72 sq. ft.
15	\$95	13 x 6	78 sq. ft.
16	\$110	14 x 6	84 sq. ft.
17	\$180	18 x 8	144 sq. ft.
18	\$120	12 x 8	96 sq. ft.
19	\$120	12 x 8	96 sq. ft.

# MAIN & FLEX GALLERY -SPACE MAP



FIRST FLOOR - NOT TO SCALE  
1:40/50 FT

MAIN + FLEX GALLERIES

UPPER GALLERIES